

EVENTS

Groundhogs Workdays

Saturday, April 13 Time TBD
Saturday, June 15, Time TBD
Snyder Prairie, Mayetta KS

Prairie Park Education & Restoration Workday

Prairie Park restoration site, 2811 Kensington
Lawrence KS
Tuesday, April 30, 5-7 PM
Saturday, May 11, 9 AM–12 PM
Saturday, June 1, 9 AM–12 PM

Emporia Native Plant Sale

Prophet Aquatic Research and Outreach
Center, 601 E 18th Ave, Emporia KS
Saturday May 11, 2 PM - 5 PM

GHF Annual Spring Native Plant Sale

Trinity Episcopal Church, 1011 Vermont
Lawrence KS, Sat. May 18, 10 AM -1 PM

Deadline for Sustaining Prairies Grant

June 1, 2024



GHF's 12th Annual Spring Native Plant Sale will be held Saturday, May 18th, 2024 from 10 AM to 1 PM at Trinity Episcopal Church in Downtown Lawrence, KS. In addition to in-person shopping, we are offering pre-orders exclusively for GHF members. We'll have approximately 60 species of Kansas native plants available! Individual plants are \$4.50 each on May 18th, available to anyone with no pre-order. Members may pre-order plants at a discounted price of \$4.00 each from April 22 to May 12. Friendly and knowledgeable native gardening experts will be available to assist you in selecting plants and to share information from their native gardening experiences. While ready-made kits will not be available this year, we will have curated lists for suggested plant groupings that you can use to create your own "garden to go" kits.

The spring plant sale is GHF's biggest fundraiser. All funds from this sale will be used to further promote our mission of prairie preservation through education, stewardship, and land protection. The sale supports our education and community outreach events that share the importance of the tallgrass prairie and share how individuals can help protect our native landscapes.

Full sale plant list is at
www.grasslandheritage.org/

See p. 2 for plants we're offering
for the first time ever!



Grassland Heritage Foundation is a non-profit 501(c)(3) membership organization dedicated to prairie preservation and education.

**GHF News is published three times a year by Grassland Heritage Foundation.
Editor: Andrea Repinsky
adheron@yahoo.com**

**Grassland Heritage Foundation
P.O. Box 394
Shawnee Mission, KS 66201**

www.grasslandheritage.org

grasslandheritage@gmail.com

grasslandheritage on Instagram

GHF Officers

**President: Sue Holcomb
Vice-President: Roxie McGee
Secretary: Mike Campbell
Treasurer: Steve Holcomb
Assistant to the Treasurer:
Kevin Bachkora**

Board of Governors

**Sara Abieta, Lawrence
Grant Adams, Lawrence
Helen Alexander, Lawrence
Reb Bryant, Lawrence
Mike Campbell, Eudora
Kathy Denning, Lenexa
Steve Holcomb, Olathe
Sue Holcomb, Olathe
Laird Ingham, Lawrence
Mary Kowalski, Kansas City
John Leahy, Iola
Daphne Mayes, Emporia
Roxie McGee, Lawrence
Brent Mortensen, Atchison
Andrea Repinsky, Lawrence
Orley "Chip" Taylor, Berryton
Megan Withiam, Lawrence**

**Program Director and
Preserve Manager
Nicole Stanton-Wilson**

A Note from the President

Spring is here! I love watching the changes taking place. The ragwort and prairie smoke have some blossoms. A lot of plants are showing their new green growth. Getting out on the prairie is more colorful.

The GHF board has been experiencing our own "spring." We've gained several new members over the last two years. These members have contributed from day one. Along with new governors, we have been working on strategic planning. We are in the process of creating thorough operations documents that will make running the organization seamless no matter who is in charge.

Our next step is reinvigorating our committees. This is a great opportunity for members to contribute by working on what interests them, whether that is communications, land management, education, the web site, or the plant sale. Watch for more info, or feel free to reach out to Nicole or myself if you'd like to get more involved.

Sue Holcomb



The Grassland Heritage Board of Governors elected at our January meeting,

From left John Leahy, Reb Bryant, Grant Adams, Helen Alexander, Sue Holcomb, Nicole Stanton-Wilson, Laird Ingham, Mary Kowalski, Megan Withiam, & Steve Holcomb, Brent Mortensen, and Mike Campbell. Joining us by Zoom were Andrea Repinsky, Roxie McGee, & Sara Abeita

New Plants at the Native Plant Sale

Antennaria neglecta - Field pussytoes: A short, colonial plant with basal leaves and flowering stems with white inflorescences about 8 inches tall. They are often found in open pastures and do not like competition.

Artemisia ludoviciana—White sage: Narrow, aromatic, white hairy plants up to 3' tall.

Baptisia alba—White wild indigo: In the bean family, this plant can grow to 5 foot tall, with pure white regular pea flowers. It prefers moist soils.

Eragrostis spectabilis—Purple love grass: Short ornamental with bright purple florets

Hibiscus moscheutos—Rose mallow: Grows best in moist areas with nearly full sun

Oligoneuron album—Stiff aster (goldenrod): A white, flat-topped goldenrod that looks like an aster.

Opuntia humifusa pads—Prickly pear cactus: Large yellow flowers, edible fruit

Silphium laciniatum—Compass plant This common roadside plant grows with deeply lobed leaves about 16 inches that align north to south, with tall yellow flowering stalks.

Solidago nemoralis—Old-field goldenrod: Goldenrods are attractive to bees and butterflies. Goldenrods have been wrongfully accused of causing hay fever which is actually an allergic reaction to wind-borne pollen from other plants such as ragweed.

Tradescantia bracteata—Long bracted spiderwort: Prairie spiderwort, long-blooming but will benefit by being cut back later in the summer and allowed to regrow.

Viola pedatifida—Prairie violet: Similar to bird's foot violet, not aggressive like common violet

Douglas County Adopts New Open Space Plan



In early May 2024, the Douglas County Commission adopted a new Open Space Plan! GHF board member Andrea Repinsky represented GHF on the Douglas County Open Space Advisory Committee, along with Kansas Land Trust, Kansas Biological Survey, and other organizations and residents, to

guide the Plan goals, public engagement process, conservation planning, and conservation strategies.

The plan focuses on community priorities for conservation,

recreation, agriculture, and historic resource protection. The plan offers a conservative recommendations for next steps for the County, focusing on public land management, coordinating conservation within the Wakarusa Valley and other focus areas, working with landowners and nonprofits, and boosting existing activities and public/landowner education with additional county staffing and public funding. The plan does not include a county land acquisition program, but conservation work in the county continues to expand and evolve. Look for future opportunities to support public funding for these expanded conservation activities.

Management Report

We were finally able to conduct our prescribed burns in two units at Snyder Prairie on February 10. Many thanks to former Preserve Manager, Frank Norman, who led the burns, and to our fantastic group of burn volunteers. We were able to accomplish all of the burning we had planned in a single day, thanks to compliant fire and near-perfect weather for a winter burn. A special thank you goes out to Bruce Yonke for volunteering your time, equipment, and humor, and to Ted Abel for running the second drip torch!

To continue our work to increase biodiversity at Snyder Prairie, the fields that we burned were seeded with 5 milkweed species to provide additional food sources for Monarch butterflies. Funding was provided through NRCS's Environmental Quality Incentives Program (EQIP) to improve habitat for monarch butterflies. For more information on this program and to determine if your property qualifies, visit the NRCS's EQIP-Kansas webpage.



March 2024 Groundhogs volunteers

The first official Groundhogs workday of 2024 took place at Snyder Prairie on March 9. Half a dozen wonderful folks helped clear the trail through the woodlands surrounding the footbridge, which connects the east and west sides of the property. At the Saturday, April 13 workday, we'll complete basal bark spray treatment of invasive bush honeysuckle and multiflora rose. To participate, please email Nicole at grasslandheritage@gmail.com.

Prairie Park Restoration Project

This winter saw two seed-related events take place for the Prairie Park restoration project in Lawrence. GHF, Native Lands Restoration Collaborative (NLRC), Kansas Land Trust,



Volunteers of all ages gathered to spread seed across 5 acres of restored prairie at Prairie Park in Lawrence.

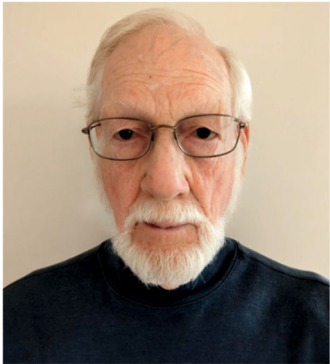
and Bridging the Gap's KC Wildlands hosted an afternoon of seed cleaning with the Kansas Native Seed Team and community volunteers. NLRC and GHF then hosted over 30 volunteers of all ages in spreading native prairie seeds across our 5 acre restoration site at Prairie Park on a cold, blustery January day. Many thanks to all of the volunteers that gave their time, energy and attention to this project!

NLRC partnered with Lawrence Parks & Recreation staff to conduct prescribed burns at Prairie Park in February, so we will see how the prairie looks later this spring!

Our final season of Prairie Education & Restoration Workdays at Prairie Park will kick-off on Tuesday, April 30 at 5pm. To RSVP, visit our website at or email Nicole at grasslandheritage@gmail.com.

Welcome to the Board, Grant, Laird, and Brent!

Grant Adams: My love of prairies stems from growing up in Western Kansas and as a child exploring hedgerows and ditches, and traipsing through cow pastures hunting with my father. At the University of Kansas I studied Ecology and Evolutionary Biology as an undergrad, and worked for 2 years as part of Bryan Foster's lab. Following my undergrad degree, I joined the Peace Corps and spent 3 years living and working with smallholder farmers in West Africa to help improve food production to combat food insecurity. After the Peace Corps, I remained in West Africa and spent 9 years working with a start-up called myAgro. This company has grown roughly 100x during my tenure there- and I've garnered experience in various domains related to growing and scaling a not-for-profit company. Currently, I'm employed as a Software Engineer for myAgro, albeit working remote from my new home in Lawrence. I joined GHF because I want to find a way to contribute to the Northeastern Kansas Community in a meaningful way, and apply my skill set to new problems closer to home.



Laird Ingham was raised in Oklahoma. He got a BS in Zoology in 1967 and an MD in 1970, both from University of Oklahoma. He practiced internal medicine in Lawrence from 1973 to 2004 and was a team physician for University of Kansas from 1984 on. He moved to San Antonio in 2005 and worked at VA until 2015. After retiring from the VA he volunteered with the Texas Master Naturalist program until moving back to Lawrence in 2023. Laird's real interest is working out on the prairie, but he has agreed to join us on the board.

Brent Mortensen: As a transplant to the Great Plains, my first experience working in prairie occurred as a graduate student at Iowa State University. My studies focused on tallgrass prairie diversity and how it changed in response to interactions between plants and animals. In searching for places to work in an already endangered ecosystem, I eventually collaborated with other students to restore a tallgrass prairie that continues to serve as a research station. As a result, I remain passionate about restoration and conservation efforts. I also joined the Nutrient Network, a global effort to better understand how grasslands function around the world, while a student working in Iowa's prairies. Currently, I teach at Benedictine College in Atchison, KS, about all things related to plants. This extends to leading undergraduate research on factors affecting diversity in the tallgrass prairie. I also teach summer classes at Iowa Lakeside Laboratory near Okoboji, IA, guiding students through field-based courses focused on the tallgrass prairie and associated biomes. I look forward to working with GHF, our volunteers, and the community to care for and learn more about our native grasslands!



More recent activities

Left, Volunteers cleaning native prairie seeds for area restoration projects

Right, Volunteers holding the fire line at Snyder Prairie



Reports from 2023 Sustaining Prairie Award Recipients

In 2023, GHF created a new program to provide financial help for management of small prairie plantings at schools, churches, and other community locations. We are particularly enthusiastic about supporting the awareness of, and interest in young people to prairies. The funds for this project were made possible by a generous donation from Dennis & Susan Lordi Marker.

We awarded six grants in 2023. We still have funds available for 2024, so we are opening another round of applications. These will be due on June 1, 2024. Check the GHF website for the application. We are still accepting donations to be matched by the Lordi-Markers.

We read about **Gardner Edgerton High School's** project in the December News. Here are the other 2023 recipients.



TJ Everett from the **Kansas Zen Center in Lawrence** reported, "Funds from the Grassland Heritage Foundation were used to purchase native grasses and flowers that we planted in our effort to establish a Zen garden appropriate for the prairie bioregion. It also paid for us to hire professional ecologists to educate us about prairie maintenance and proper planting techniques. We were able to host two community planting workdays in 2023 to bring awareness to our community about the importance of native prairie plants and how we all can help cultivate the restoration of our native landscape."

Blue Valley High School teacher, Kale Mann, reported on their work at the Stanley Nature Park & Education Center on their campus. "We were able to use this grant money to buy

hand tools for our students to work in the garden and to purchase plants to transplant into our nature area. We bought 10 shovels and 5 loppers. We used the loppers to cut down Amur Honeysuckle which is invading our area. The shovels we used to plant plants and to dig out prickly lettuce and thistle in the prairie area. In addition we were able to print signage for our Nature Park."

Nicole Brown commented that **Grassland Groupies** in Wichita was extremely grateful to be a recipient of the 2023 Sustaining Prairies Grant. The funds received were used to purchase gardening supplies (gloves, weeding tools, and a garden cart) and equipment (pocket microscopes, clipboards, nets). These tools were put to great use in the community, where they helped improve Wichita native plant gardens including a Monarch Waystation and surrounding grassland areas, and enabled exploration in those spaces through our educational programs. They used the equipment purchased such as insect nets to reach just over 250 children and adults. Grassland Groupies also hosted a large event called ICT Bee Fest focused on insect education. The event, hosted at the Mid-America All-Indian Museum, featured native garden tours and encouraged people to explore the space and catch insects. Over 500 people attend this free event.



Patti Ragsdale with **Botanical Belonging** reported on the Family Prairie Experiences held at Happy Apple Farm's prairie remnant. Walks through the prairie used all the senses to explore and learn. The tours finished at native gardens and participants were sent home with a potted plant. Tools purchased with grant money were used by adults learning to handle natives in a home garden, and by

Prairie Explorers Youth Programs this summer.

Michelle L. Conine, of the **Mid-America All-Indian Museum** in Wichita sent this report: "During 2023 we were able to hire contractors who worked 10 hours to clean out the sumac trees and other invasive plants from our Outdoor Learning area. They cut down the old growth in our front flower beds and were able to remove the dead shrubs in our butterfly garden at the back of our building. We were able to purchase new garden tools so we will be able to maintain the areas. These tools will be used by the Native youth in an effort to allow for an immersive prairie experience. The staff and other volunteers will make use of these garden tools

cont'd p. 7

Spring 2024 Donations

Welcome to new and returning members: Becky Bokay, Marnie Clawson, Tim Collins, Georgann Eglinski, Corey Entriken, Roshelle Ford, Donna Horn, Laird & Carol Ingham, Joan Kenny, Karan Krna, Melissa Lauer, Carol Lunn, Samantha Krukowski, Kelly Magerkurth, Susan Phillips, Anthony Taylor, Katie Tonniges, Jenna Waiser

Education Fund: Kelly Magerkurth, Nancy Hamill Winter

Prairie Protection Fund: Becky Bokay, Tim Collins, Courtney Masterson & Ryan Riedel, Jo Myers, Ronald Sisk, Katie Tonniges

Prairie Management Fund: Marnie Clawson, Nicole Stanton-Wilson

In Honor of Mary Kowalski: Ann Simpson

In Honor of Stephen Lauer: Melissa Lauer

In Memory of Deborah L. Ward: Carol Lunn

In Memory of Gary Tegtmeier: Ted Abel Mary Kowalski

In Memory of Bob Lewis & Mrs. & Mr. Runnalls: Katie Tonniges

In Memory of Eugenia Eisley: Mandy Jolly

Kansas Day Donation from The Roost in Lawrence

In Memory of Rex Powell: Cathy Reinhardt

Black & Veatch Corporation Employee Matching Gifts Fund for Tim Collins

Sustaining Prairies Donors: Fred & Jenna Sack, David Wagner
Special Thanks to Dennis & Susan Lordi Marker for the Match for Sustaining Prairies

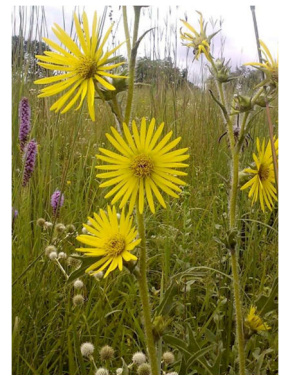
GHF in National Wildlife Magazine

We're delighted to appear in the Spring 2024 issue of the National Wildlife magazine, published by the National Wildlife Federation. An article highlights the importance of native seeds in restoring various habitats across the United States. Professionals from federal, state and non-profit agencies share information about their efforts, including one of our former Board Members and long-time partner, Courtney Masterson with Native Lands Restoration Collaborative (NLRC). NLRC and GHF's joint work at Black Jack Battlefield and Nature Park is among the many projects highlighted.

The article also introduces the National Seed Strategy Keystone Initiative by the U.S. Department of the Interior, which GHF learned of while attending the virtual National Native Seed Conference in February. This is an exciting time for those of us involved in seed-based restoration and native seed collecting! Stay tuned for further information in the future regarding seed collecting opportunities with GHF and our partners.

Plant Sale Highlight: Compass Plant

Compass flower (*Silphium laciniatum*) is named for the beautifully lobed basal leaves of the plant having a tendency to align themselves north and south. These leaves are shaped like an oak leaf, but larger. Another unique feature is the wonderful smell that the resinous sap emits when warmed by the sun. Compass plant can be an interesting addition to a formal garden if placed near the back edge to create textural interest with the basal leaves earlier in the season followed by a tall focal point with the stunning stalk of yellow sunflower-like flowers later in the season.



2024 Gaylord Atkinson Memorial Scholarship Recipients

Thank you to all the students who applied for our Gaylord Atkinson Memorial Scholarship and the advisors who took time to write letters of recommendation. A committee read and assessed the applications, and we are happy to announce the recipients of this year's scholarships.

Jack Sytsma, KSU, a PhD student for Intraspecific variation and genetic diversity of the dominant prairie grass: Identifying populations for climate change mitigation

Aleah Querns, KSU, a PhD student for a project on the relative effects of fire, grazing, and climate on eastern redcedar woody encroachment

Emma Greenlee, KSU a master's candidate in Biology for the effects of grazing management on plant-pollinator networks and bee nesting habitat

Partial grants were awarded to:

Dorothea Summers, University of Kansas, Masters in Ecology & Evolutionary Biology on Assessing Phenotypic Variation in Dominant Prairie Grass Species between Remnant and Restored Populations for Ecosystem Restoration

August Brunette, KSU, Master of Science in Entomology, for prairie bee community composition along a precipitation gradient and grazing effect in Kansas

Heather Poyner, KSU, Masters in Entomology, for understanding the interactive effects of Conservation Reserve Program pollinator plantings and beekeeping on native plant-pollinator interactions

We depend on your contributions!

Please help GHF protect prairie by sending your donation today.

The date of your last contribution is printed above your name on the mailing label.

Contribute online or send this form to: Grassland Heritage Foundation, PO Box 394, Shawnee Mission, KS 66201

Membership Categories: \$20 Friend \$35 Family \$50 Steward \$100 Sustaining \$250 Conserver
 \$500 Patron \$1000 Benefactor \$5000 Founder \$15 Student/Retiree

Name _____

Address _____

City _____ State _____ Zip _____

Phone _____ Email _____

Save postage/printing and email my PDF newsletter **OR** Send my printed newsletter to the above address

Contact me about volunteering

Gift in *honor* or *memory* of (mark which) _____

Your contribution will support prairie conservation in the general fund unless you designate your donation for:

- Scholarship Fund
- Prairie Protection
- Education Programs
- Prairie Management

You can also send
membership renewals and
donations to GHF online at
www.grasslandheritage.org



'Thank You' to:

To all of the volunteers that volunteered their Sunday afternoon to help clean native prairie seed at the East Lawrence Recreation Center, along with Native Lands Restoration Collaboration, the Kansas Land Trust, and Bridging the Gap's KC Wildlands staff for organizing a wonderfully informative session!

To the many volunteers and families that braved the cold January winds to help spread seed across the restoration area at Prairie Park. What fun we had!

To Frank Norman for leading our prescribed burns at Snyder Prairie and to Brue Yonke for providing his ATV, water unit, and time to assist in making our prescribed burns as smooth as possible.

To the dedicated Groundhogs and Board Members who volunteered to assist with prescribed burns and who kept the fires within their bounds! Thank you so very much, Ted Abel, Jeff Beecher, Michael Campbell, Ann Davin, Jim Davin, Laird Ingham, Hillary Kass, Phil Munoz, Jesse Wilson, and Megan Withiam.

To the Groundhogs & Board Members who cleared our trail through the woodland footbridge path at Snyder Prairie: Sara Abeita, Ted Abel, Sue Holcomb, Steve Holcomb, Laird Ingham, and Jay VanBlaricum.

To Ted Abel for volunteering to map the fire plan at Snyder

Prairie, and his willingness to trouble-shoot faulty drip-torches!

An extra hearty thank you to Jerry Jost for volunteering a Saturday morning and your expertise in facilitating a strategic planning conversation with the GHF Board.

To all of our dedicated volunteers, members and board members that have already signed-up to volunteer for the Spring Plant Sales – you are the reason our sales are possible! Thank you!

To Mike Campbell for arranging our Annual Meeting place at Neosho County Community College.

To Kevin Bachkora for assisting our treasurer with our monthly statements.

Sustaining Prairies, Continued

as well. We are excited for 2024 as we are planning a celebration of the Keeper of the Plains 50th anniversary, most of which will be in our back grounds on May 18th. Our plan is to get into the gardens early in the year to prepare them to be overseeded. We will be planting new native plants in the different areas. We will be removing any remaining invasive plants (poison ivy and sumac) we find. We do not use poisons to remove these plants because of our two thriving bee hives."

Grassland Heritage Foundation
PO Box 394
Shawnee Mission, KS 66201

Non-Profit Organization
US POSTAGE PAID
Olathe, KS
Permit No. 309

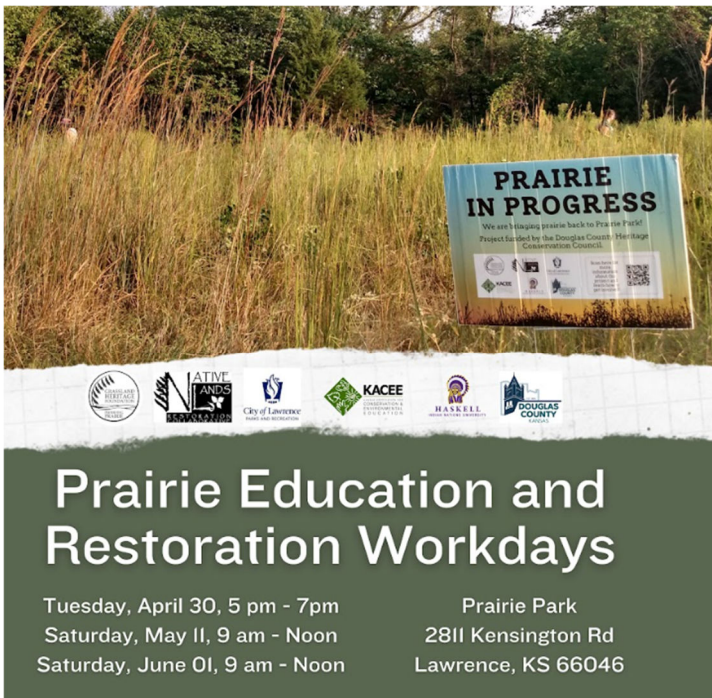
Return Service Requested

Your last contribution was made:

To receive your newsletter in pdf form by email, contact Sue Holcomb at sholc2003@yahoo.com or (913) 856-4784.
Enjoy your newsletter in full color on our website: www.grasslandheritage.org.



Printed on Recycled Paper



PRAIRIE IN PROGRESS
We are bringing prairie back to Prairie Park!
Project funded by the Douglas County Heritage Conservation Council.

Prairie Education and Restoration Workdays

| | |
|--------------------------------|--------------------|
| Tuesday, April 30, 5 pm - 7pm | Prairie Park |
| Saturday, May 11, 9 am - Noon | 2811 Kensington Rd |
| Saturday, June 01, 9 am - Noon | Lawrence, KS 66046 |

Logos: Grassland Heritage Foundation, Native Lands Restoration Collaborative, City of Lawrence, KACEE, Haskell, Douglas County



2024
MAY 11
NATIVE PLANT SALE
2 PM - 5 PM
@ Prophet Aquatic Research & Outreach Center (PAROC)

Logos: Native Lands Restoration Collaborative, Emporia State University, Grassland Heritage Foundation, Preserving Prairie

Join GHF at the Prophet Aquatic Research & Outreach Center at Emporia State for a native plant sale! Explore plants and options for your space, and how native plants will add beauty and habitat for birds, pollinators, and more! GHF and Native Lands Restoration Collaborative will give presentations followed by a tour of the riparian restoration work north of the PAROC.

Schedule of Events for Saturday, May 11:

- 2-5 PM: Native Plant Sale
- 2-5 PM: Hands-on activities in PAROC Classroom.
- 2 PM: Native Plants Talk with Native Lands Restoration Collaborative
- 3 & 4 PM: Basics of Native Plant Gardening with GHF

Free and open to all ages, no registration required!